

## Intara SQ 175

Article number: 51160011

### LIGHT TECHNOLOGY

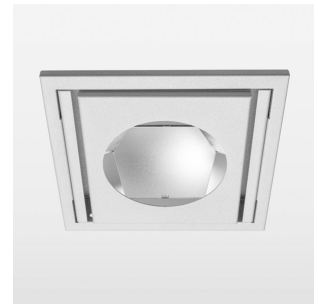
LED	COB
Light colour	835
Luminous flux	5520 lm
System power	47 W
Luminaire Efficiency	117 lm/W
Reflector	OvalBasic
Beam angle	60° x 30°
Controller	On/Off

### LUMINAIRE

Swivel angle	30°
Weight	1.9 kg
Protection rating . class	IP 20 . III
Luminaire colour	white

### OPTIONEEL

RAL-colours, NCS-colours (powder coating or wet spraying) on inquiry, surface alloys on inquiry, honeycomb louver

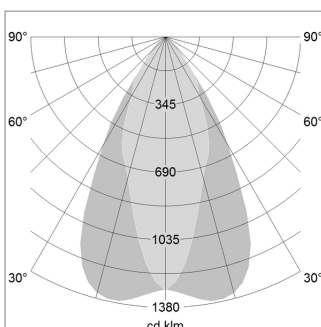


Recessed luminaire with LED, rated life of the LED L80/B10 > 50000 h, colour rendering index CRI > 80, chromaticity tolerance 2 SDCM (initial), reflector with oval light distribution pattern, swivel angle 30° luminaire housing sheet steel, powder-coated, white, separate driver unit

76500092 driver unit, On/Off, 220-240 V / 50-60 Hz, 1200 mA, camera-compatible, up to 2.5 KV interference resistance, SELV, max. 24 luminaires per circuit (B16A fuse)

76500093 driver unit, DALI, 220-240 V / 50-60 Hz, 1200 mA, with GST18/5-pin connector, incl. 5-conductor feed-through wiring, camera-compatible, up to 2.5 KV interference resistance, SELV, max. 30 luminaires per circuit (B16A fuse)

Note: All data are typical values. System features may change with product improvements due to technical advances. Errors excepted.



Height (m)	Beam Diameter (m)	Beam Diameter (ft)	Beam Area (lx)
1.0	1.05	0.41	8595.5
2.0	2.10	0.82	2148.9
3.0	3.15	1.22	955.1
4.0	4.20	1.63	537.2
5.0	5.25	2.04	343.8

Ø (m) E0(0°) [lx]

